

# AgriLink RAL120/90/60 motor gearboxes



The Ridder AgriLink RAL120/90/60 motor gearboxes are maintenance-free drive units with an integrated control system and Ridder PositioningUnit (RPU) for adjusting air inlets and ventilation flaps to any position in livestock houses and crop storage buildings. The easy-to-install RAL120/90/60 motor gearboxes are enclosed in a sealed housing with a high protection rating of IP55. This provides the AgriLink drive units with excellent resistance to water and dust penetration. The RAL120/90/60 motor gearboxes are designed to operate at ambient temperatures between 0 and 40 °C.

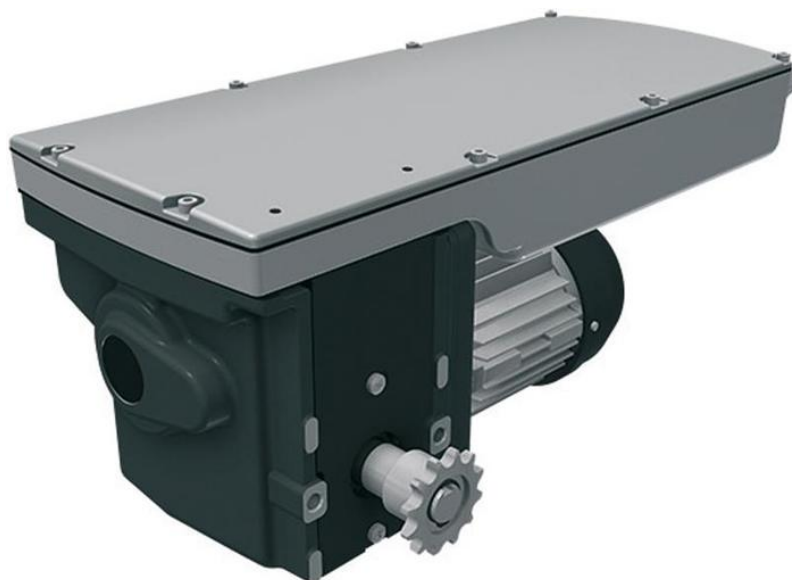
All AgriLink RAL120/90/60 motor gearboxes feature a self-braking worm gear transmission. This transmission ensures that the output shaft is braked when the drive unit is stopped. The combination of carefully matched pinion and worm reductions results in a very quiet mechanical transmission. The RAL120/90/60 motor gearboxes are standard fitted with sprockets for chain couplings (12-tooth, 1/2"x5/16"). The RAL120/90/60 motor gearboxes are suited for intermittent use (duty class s3-35%) with a maximum duty cycle of 25 minutes.

The RAL120/90/60 motor gearboxes are equipped with 1-phase electric motors with an integrated control unit and position sensor. The control unit is equipped with connections for the supply voltage and for a 0-10 V DC control signal. This control signal and the feedback signal from the Ridder RPU PositioningUnit allow for accurate position control of the RAL120/90/60 motor gearboxes. The control unit also monitors the control signal. If the control signal is lost (< 1 V), then an alarm contact is activated and the RAL120/90/60 motor gearbox is adjusted to a pre-set emergency position. The RAL120/90/60 motor gearbox can be operated manually with the optional manual control. The RAL120/90/60 motor gearboxes are equipped with the patented RSU linear limit-switch system, featuring limit and safety switches with high switching accuracy. The maximum switching range of the limit-switch system is 97 revolutions of the drive shaft.

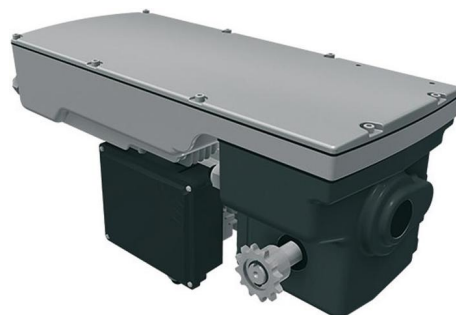
The RAL motor gearbox is fitted with readily accessible terminal strips to connect the wiring and equipped with cable glands with cap for attaching and securing the end of the power and control cabling. The RAL motor gearbox is finished with a graphite grey powder coating and is supplied including fixing bolts and spring washers.

## AgriLink RAL120/90/60 motor gearboxes:

- Drive torques from 60 to 120 Nm at 50 Hz and 60 Hz mains frequencies;
- Rotation speeds of 1 rpm at 50 Hz, 1.2 at 60 Hz mains frequency;
- Manual control possible with optional manual switch;
- Manual drive enabled by means of a hexagon socket in electric motor shaft;
- Equipped with 1-phase electric motors, 230 V at 50/60 Hz;
- Alternative versions on request.



# AgriLink RAL120/90/60 motor gearboxes



Art. no.	Description	[m] kg	[M] 50Hz Nm	[n] 50Hz /min	[M] 60Hz Nm	[n] 60Hz /min	EM	F -	PTC	CSA UL	EM nr
560101	RAL120-1-230\1\97	16,5	120	1,0	120	1,2	D	1			761001