



Spoked handwheels  
with solid section



# VRTP-P+I-SST

**INOX**  
Stainless Steel

ELESA Original design

## Spoked handwheels with solid section and revolving handle

PP-FDA PA-FDA

-80°C  
0°C  
RoHS



design81  
if81  
stuttgart

### Material

High-resilience polypropylene based (PP) technopolymer. Resistant to solvents, oils, greases and other chemical agents. Certified in compliance with FDA (U.S. Food and Drug Administration).

### Colour

Black, matte finish.

### Boss-cap

Anodised aluminium self-adhesive front plate.

### Standard execution

AISI 304 stainless steel boss, H7 reamed hole.

Revolving handle type I.621 not removable in polyamide based (PA) technopolymer, certified in compliance with FDA, black colour, matte finish. AISI 304 stainless steel pin.

### Special executions on request

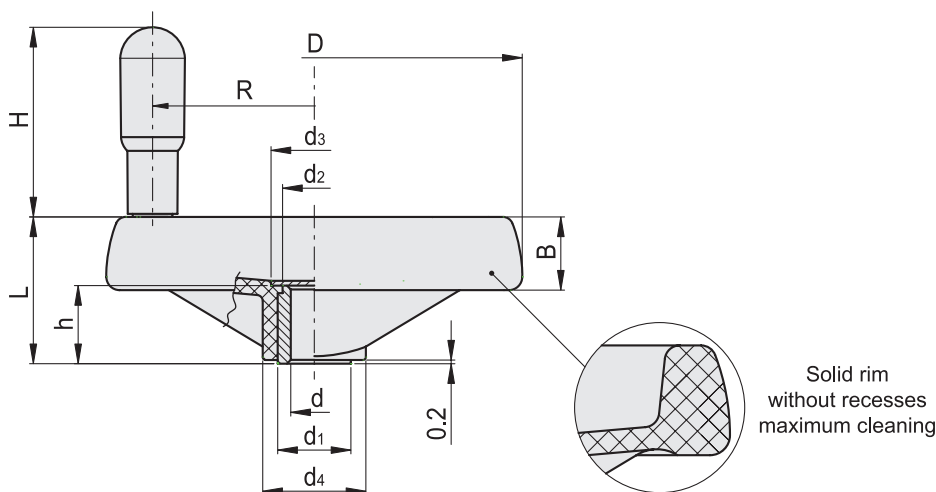
- Handwheel without handle.
- Boss with hole and keyway in compliance with DIN 6885/1 P9 tolerance (see Catalogue 038 Technical Data page A17).  
To order the handwheel with keyway complete code and description with the index -K (i.e. 79111-K VRTP.80-P+I-SST-8-K).

### Accessories on request

Axial retaining washer type GN 184.5 (see Catalogue 038 page 631).

### Features and applications

The solid rim of the handwheel allows the maximum cleaning thanks to the absence of rear recesses. For this reason, being the technopolymer polypropylene based and the metal components in AISI 304 stainless steel, this version of VRTP. handwheel is designed for applications in food, pharmaceutical and medical fields.



Standard Elements		Main dimensions							Bore		Handle		C #	L #	△△
Code	Description	D	L	B	d1	d2	d3	d4	d H7	h	H	R	[Nm]	[J]	g
79111-R	VRTP.80-P+I-SST-8	80	35	18	18	16	20.5	25	8	17	45	29	32	5	104
79161-R	VRTP.100-P+I-SST-10	99	37	20	18	16	20.5	25.5	10	17	60	37	54	7	145
79211-R	VRTP.125-P+I-SST-12	125	44	22	22	20	26	31	12	22	65	48	94	10	245
79261-R	VRTP.160-P+I-SST-14	160	51	25	26	24	32	40	14	27	73	65	185	15	356
79311-R	VRTP.200-P+I-SST-16	200	61	28	30	28	36	50	16	34	80	84	300	24	552

# See Catalogue 038 Technical Data page A8 for maximum applicable torque (C) and impact strength (L).

# VRTP-P+IR-SST INOX Stainless Steel

ELESA Original design

## Spoked handwheels with solid section and fold-away handle

PP-FDA PA-FDA

-80°  
0°  
RoHS



design81  
if 81  
stuttgart

### Material

High-resilience polypropylene based (PP) technopolymer. Resistant to solvents, oils, greases and other chemical agents. Certified in compliance with FDA (U.S. Food and Drug Administration).

### Colour

Black, matte finish.

### Boss-cap

Anodised aluminium self-adhesive front plate.

### Standard execution

AISI 304 stainless steel boss, H7 reamed hole.

Fold-away handle type IR.620 in polyamide based (PA) technopolymer, certified in compliance with FDA, black colour, matte finish. AISI 304 stainless steel pin, bushing and internal components, AISI 316L stainless steel support.

### Special executions on request

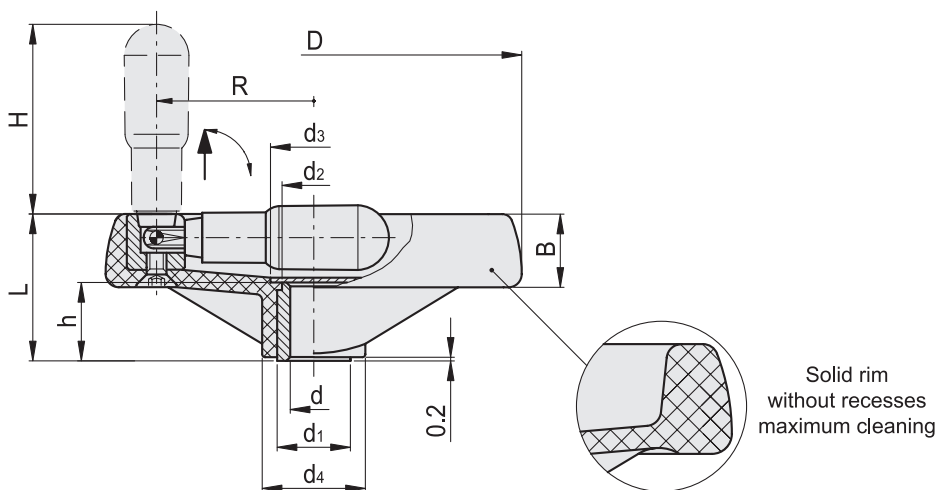
- Handwheel without handle.
- Bosses with hole and keyway in compliance with DIN 6885/1 P9 tolerance (see Catalogue 038 Technical Data page A17).  
To order the handwheel with keyway complete code and description with the index -K (i.e. 79121-K VRTP.80-P+IR-SST-8-K).

### Accessories on request

Axial retaining washer type GN 184.5 (see Catalogue 038 page 631).

### Features and applications

The solid rim of the handwheel allows the maximum cleaning thanks to the absence of rear recesses. For this reason, being the technopolymer polypropylene based and the metal components in AISI 304 stainless steel, this version of VRTP. handwheel is designed for applications in food, pharmaceutical and medical fields.



Solid rim  
without recesses  
maximum cleaning

Standard Elements		Main dimensions							Bore		Handle		C #	L #	△△
Code	Description	D	L	B	d1	d2	d3	d4	d H7	h	H	R	[Nm]	[J]	g
79121-R	VRTP.80-P+IR-SST-8	80	35	18	18	16	20.5	25	8	17	45	29	32	5	102
79171-R	VRTP.100-P+IR-SST-10	99	37	20	18	16	20.5	25.5	10	17	60	37	54	7	163
79221-R	VRTP.125-P+IR-SST-12	125	44	22	22	20	26	31	12	22	65	48	94	10	230
79271-R	VRTP.160-P+IR-SST-14	160	51	25	26	24	32	40	14	27	73	65	185	15	388
79321-R	VRTP.200-P+IR-SST-16	200	61	28	30	28	36	50	16	34	80	84	300	24	593

# See Catalogue 038 Technical Data page A8 for maximum applicable torque (C) and impact strength (L).

# Spoked handwheels with solid section

For applications in food, chemical, pharmaceutical and medical fields in compliance with specific hygienic rules.



## **Material suitable for food contact**

Technopolymer handwheel and handle.  
Certified in compliance with FDA  
(U.S. Food and Drug Administration).

## **Corrosion resistance**

1. AISI 304 stainless steel handwheel central boss
2. AISI 304 stainless steel revolving handle pin
3. AISI 304 stainless steel pin, bushing and internal components, AISI 316L stainless steel support

## **Easy cleaning**

4. Solid rim
5. Hub without recesses



ELESA S.p.A.  
Via Pompei 29  
20900 Monza (MB) ITALY  
Phone: +39 039 28 11.1  
Fax: +39 039 83 63 51  
[www.elesa.com](http://www.elesa.com)  
[info@elesa.com](mailto:info@elesa.com)

OTTO GANTER GmbH & Co.KG  
Triberger Straße 3  
78120 Furtwangen GERMANY  
Phone: +49 7723 65 07 130  
Fax: +49 7723 65 07 165  
[www.ganter-griff.com](http://www.ganter-griff.com)  
[info@ganter-griff.de](mailto:info@ganter-griff.de)

[www.elesa-ganter.com](http://www.elesa-ganter.com)